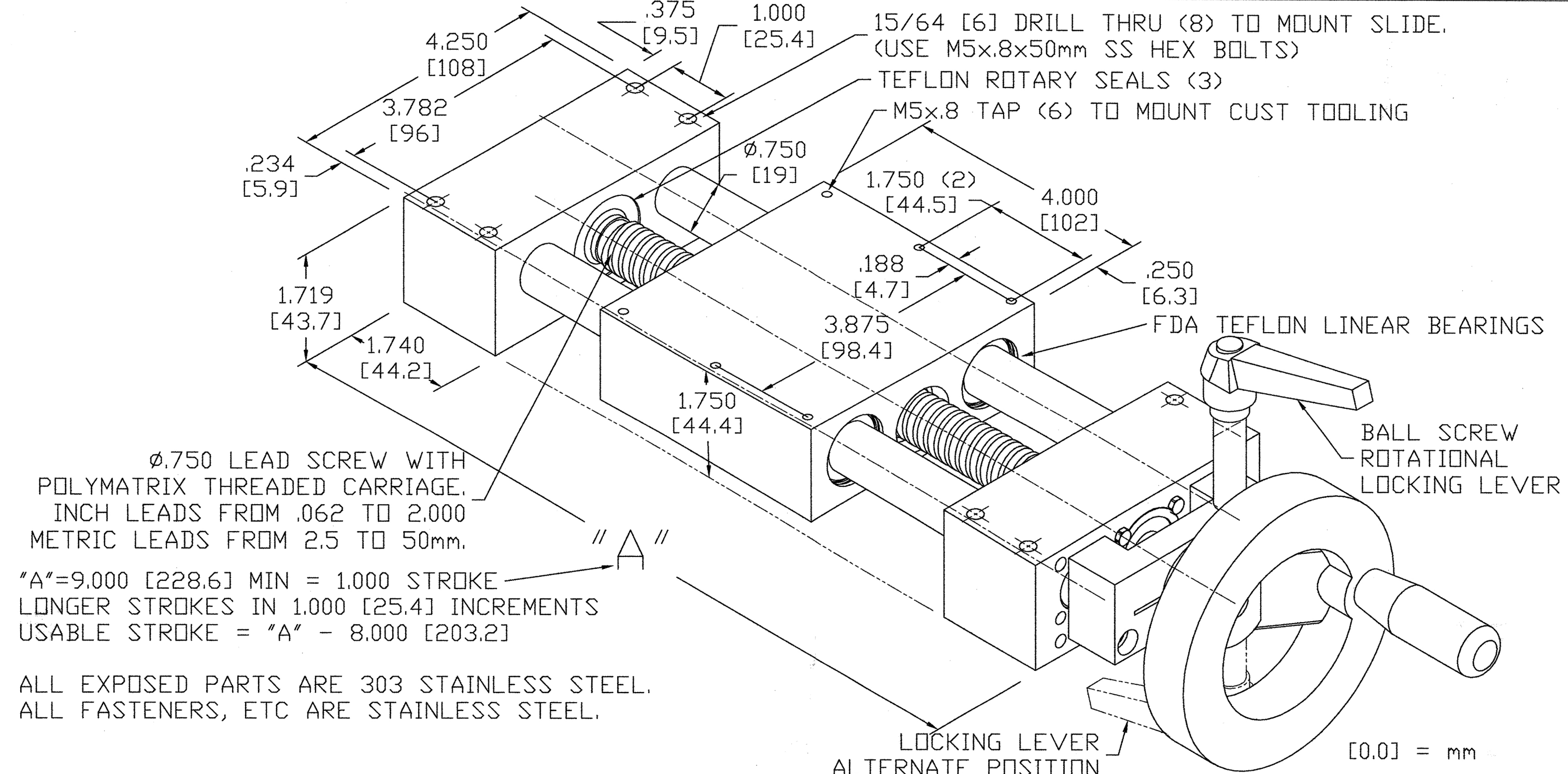


PROPRIETARY RIGHTS NOTICE: THIS DRAWING IS THE PROPERTY OF LM76, BOSTON, MA, AND IS A PROPRIETARY ARTICLE TO WHICH LM76 RETAINS ALL RIGHTS, INCLUDING THE EXCLUSIVE RIGHT OF USE, MANUFACTURING, AND SALE OF ARTICLE(S) SHOWN. THE PROPRIETARY INFORMATION IN THIS DRAWING IS DISCLOSED IN CONFIDENCE AND IS FURNISHED UNDER THE EXPRESS CONDITION THAT IT IS NOT TO BE USED DIRECTLY OR INDIRECTLY IN ANY WAY DETRIMENTAL TO THE INTREST OF LM76. POSSESION OF THIS DRAWING DOES NOT CONVEY PERMISSION TO USE IT OR THE PROPRIETARY INFORMATION OR TO MANUFACTURE THE ARTICLE(S) SHOWN WITHOUT PRIOR WRITTEN PERMISSION FROM LM76.



COPYRIGHT NOTICE: THIS DRAWING IS PROTECTED BY US AND INTERNATIONAL COPYRIGHT LAWS, AND IS NOT TO BE COPIED OR REPRODUCED IN WHOLE OR IN PART, IN ANY FORM WITHOUT ADVANCE WRITTEN PERMISSION FROM LM76, EXCEPT THAT THIS DRAWING MAY BE REPRODUCED INCIDENT TO THE NORMAL BUSINESS ACTIVITIES FOR WHICH IT WAS FURNISHED BY LM76, PROVIDED THE ENTIRE DRAWING IS REPRODUCED WITHOUT MODIFICATION, INCLUDING THIS NOTICE AND ALL OTHER NOTICES IN THEIR ENTIRETY ON THE DRAWING AS FURNISHED BY LM76, REGARDLESS OF THE FORM OF SUCH REPRODUCTION. BY REPRODUCING THIS DRAWING, YOU AGREE TO LIMIT ITS USE IN ACCORDANCE HERewith, AND WILL NOT VIOLATE LM76'S COPYRIGHTS, PROPRIETARY RIGHTS, AND OTHER RIGHTS THEREIN. ALL COPYING, REPRODUCTION AND USES OTHER THAN PROVIDED FOR IN THIS NOTICE ARE EXPRESSLY PROHIBITED WITHOUT THE ADVANCE WRITTEN CONSENT OF LM76.

LM-TARBELL		DESCRIPTION		SHEET 1 OF 1	
140 INDUSTRIAL DRIVE, EAST LONGMEADOW, MA		"SEAL SLIDE"		CUSTOMER:	
PH: (800)513-3163 FAX: (413)525-3735		UNSUPPORTED STAINLESS STEEL		STANDARD	
www.lm76.com		SLIDE ASSEMBLY WITH HAND CRANK		ASSEMBLY NO. or PROJECT NO.	
		AND LEAD SCREW ROTATIONAL LOCK.		HWL-XUV-12-TAB-???	
		DRAWN BY	DATE DRAWN	SCALE	
			4/12/07	1:2	

ASSEMBLY NO. or PROJECT NO.